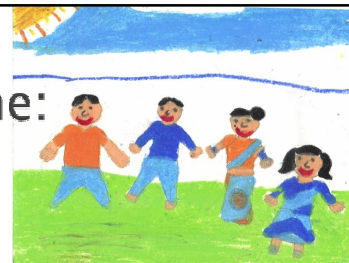


Quality ECD Programme and Role of the Community

Amita Govinda



Quality ECD Programme: Broad Principles



- ▶ There is no universal model of Early Childhood Care and Education that can be followed globally
- ▶ Good quality ECCE builds on local experiences while drawing on and adapting lessons learned by others

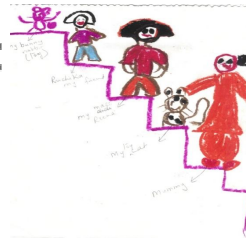
Quality ECD Programme: Broad Principles



Good quality, holistic early childhood programmes share some characteristics :

- ▶ Focussing on and offering support to parents during children's earliest years;
- ▶ Integrating educational activities with other services, notably health care, nutrition and social services;

Quality ECD Programme: Broad Principles



- ▶ Providing relevant educational experiences during pre school years and easing the transition into primary school.
- ▶ Developmentally age appropriate pedagogy

Quality ECD Programme: Broad Principles



- ▶ Making connections
 - Teachers-to-Children
 - Children-to-Children
 - Parents-to-Teachers

- ▶ Understanding the Human Context
 - Acceptance
 - Encouragement
 - Identification and tapping talents

Quality ECD Programme: Broad Principles

- ▶ Use of the language of the child and the community can enrich content and communication

- ▶ Help develop self esteem

- ▶ Promote gender equality and social inclusion
- learning to play together and learn together

The Poor Speak: Education is the only hope ...



10-year old girl child:
I am happy at least my brother is able to go to school. I wish I could also go. I cannot blame my parents. They are already sacrificing so much for us, working day and night in spite of poor health
I will anyway get married and go away. If my brother studies he could help improve the life of my parents

Quality ECD Programme: Broad Principles

- ▶ ECD programmes are generally accompanied by Parent Support/Education Activities
- ▶ In most societies, child care is seen as concern of the family, immediate or extended and not the concern of outsiders
- ▶ The best way to support home environment is to work with parents of very young children

Role of Community in Quality Enhancement of ECD

Amita Govinda

Role of Community in Quality Enhancement of ECD

- ▶ Community involvement has to be at all stages
 - Planning
 - Implementation/Delivery
 - Monitoring
- ▶ Build indicators to specify the Role that the Community could play in each stage

Role of community for quality monitoring for ECD – Planning

- ▶ Participation in decision making in identifying and locating ECD centre
- ▶ Mobilizing community for building infrastructure and other resources
- ▶ Planning the curriculum – Providing experiential knowledge in curriculum building

Quality Indicators



Physical infrastructure

- ▶ Adequate indoor and outdoor space.
- ▶ Innovative use of space, If it is not adequate
- ▶ Clean, and safe drinking water
- ▶ Availability of adequate play equipment/material – could use local material and traditional games

Role of community in Functioning of ECD programme

- ▶ Bring parents to participate in the functioning of the programme
- ▶ Selection of teachers/care-givers from local community
- ▶ Ensuring continuous dialogue and feedback between parents/ community members and those who manage the centre

Some Quality Indicators in Implementation

- ▶ Classroom Processes and nature of engagement – parents and grand parents can be part of it
- ▶ Community members can bring local knowledge and culture into the classroom – child has to feel one with the nature around



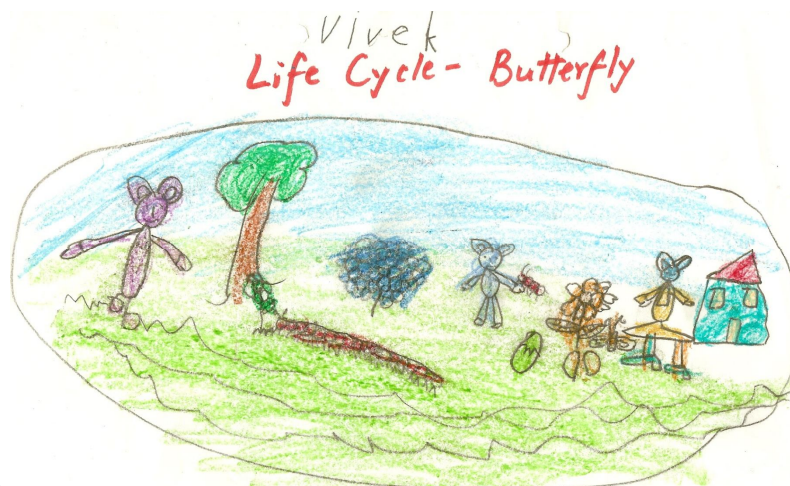
Some Quality Indicators in Implementation

- ▶ Involving community members in identifying locally relevant themes and concept mapping – for instance introduction of every concept and theme has to be localised – water, birds and animals, etc – use of relevant vocabulary and imageries
- ▶ Yet, parents and community members can only enrich – basic inputs have to come from professionally trained teachers/care-givers

Some Quality Indicators in Implementation



Some Quality Indicators in Implementation



Some Quality Indicators in Implementation

- ▶ Parents and community need to know about child learning process, the role of the teacher in the learning process, how the teacher's attitude impacts the learning of the child as well as his/ her overall development
- ▶ Encouragement and support of parents help sustain motivation level of teachers

Role of community for quality monitoring for ECD Programmes

- ▶ Community involvement helps build ownership and ensure that the Programmes respond to community expectations
- ▶ Help in tracking the progress of children – physical, cognitive, social–emotional – through diagnosing and rectifying difficulties in terms of dietary habits, access to nutritious food and so on
- ▶ Create a commonly agreed Framework for observing and recording development – should be usable by non–literate or semi–literate parents also
- ▶ Help in creating critical mass of community based child care groups for ensuring quality